



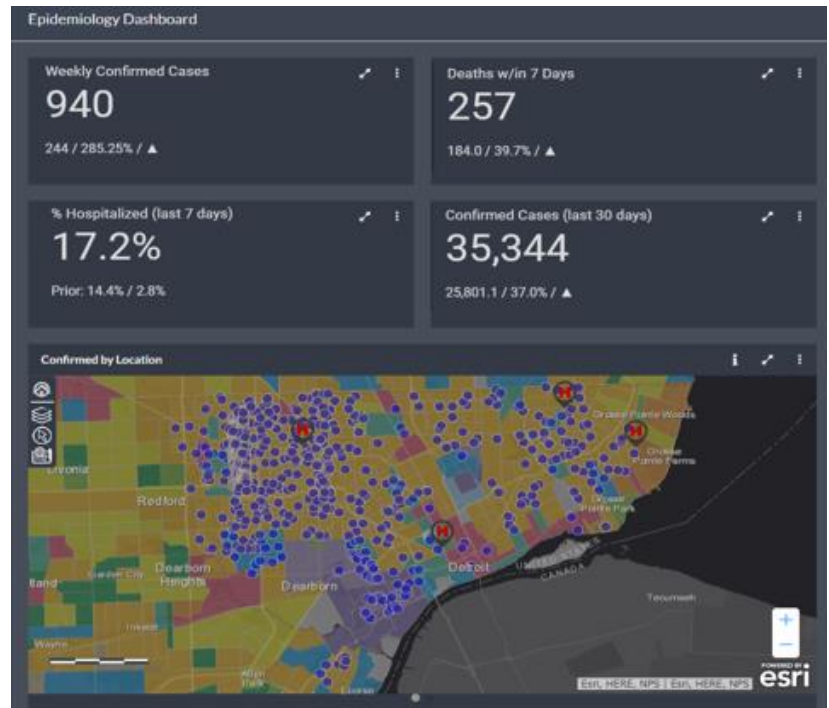
Blue Prism & Information Builders: Accelerating Epidemiological Surveillance Capacity with *xStream Insights*

As the number of COVID-19 cases grows worldwide, the ability to quickly and accurately gain insights into the spread of this contagious disease is critical.

For epidemiologists and health care providers, tracking and investigating infectious disease is time consuming and inefficient. Systems are backlogged, and response times are slow.

The Challenge

Epidemiologists need a faster, more efficient way to identify, track and investigate disease outbreak. The current process is largely manual, time consuming and inefficient. Decision makers are unable to act rapidly.



The Solution

In times of crisis, every second counts. Contagious infection spreads fast, and poor information spreads faster.

Decision makers need a solution that supports early detection of outbreaks and empowers the full emergency response eco-system with actionable information. The solution is *xStream Insights*.

Together, BluePrism and Information Builders deliver a fully integrated, secure, automated solution that's easy to use and quick to deploy.

Cloud based technology works with current investigative processes delivering actionable insights through data integration and validation, mapping, visualization and analysis—including predictive.

Driven by an enterprise-graded digital workforce on an intelligent automation platform, the combined solution lets you **identify, analyze, trace and report disease outbreak using Blue Prism RPA coupled with data management and analytics from Information Builders.**

Enterprise Benefits

- ✓ Digitally automated insights, information-driven analytics
- ✓ 3 clicks to COVID-19 digitized visualization dashboard
- ✓ Digital Workforce uses publicly available data
- ✓ Applicable to all communicable disease now and in the future
- ✓ Pre-Built CV19 KPI's OTB
- ✓ Fulfill Local/State/Regional/Federal mandated reporting
- ✓ Streaming COVID-19 Geo-Coded Updates
- ✓ Integrate with ERP, SCM, CRM, EPIC/CERNER & Health Systems & Insurance
- ✓ Mobile data entry for quick on-site collection

**When hyper-automation meets digitized visualization,
the results are outstanding.**

Learn More

About Information Builders

Information Builders is the leading data and analytics company. We help organizations operationalize and monetize their data through insights that drive action. Our integrated platform for business intelligence (BI), analytics, data integration, and data quality, combined with our proven expertise, delivers value faster, with less risk. We believe data and analytics are the drivers of digital transformation, and we're on a mission to help our customers capitalize on new opportunities in the connected world.

About Blue Prism

Blue Prism's vision is to provide a Digital Workforce for Every Enterprise. We're looking to unleash the collaborative potential of humans and the Digital Workforce so you can exceed your business goals and grow with unmatched speed and agility. Fortune 500 and public-sector organizations trust Blue Prism's enterprise-grade, connected-RPA platform as they create new opportunities and services, while unlocking massive efficiencies that return millions of hours of work back into their business. Visit www.blueprism.com to learn more about Blue Prism (AIM: PRSM).

Please reach out with questions to xStreamInsights@Blueprism.com